

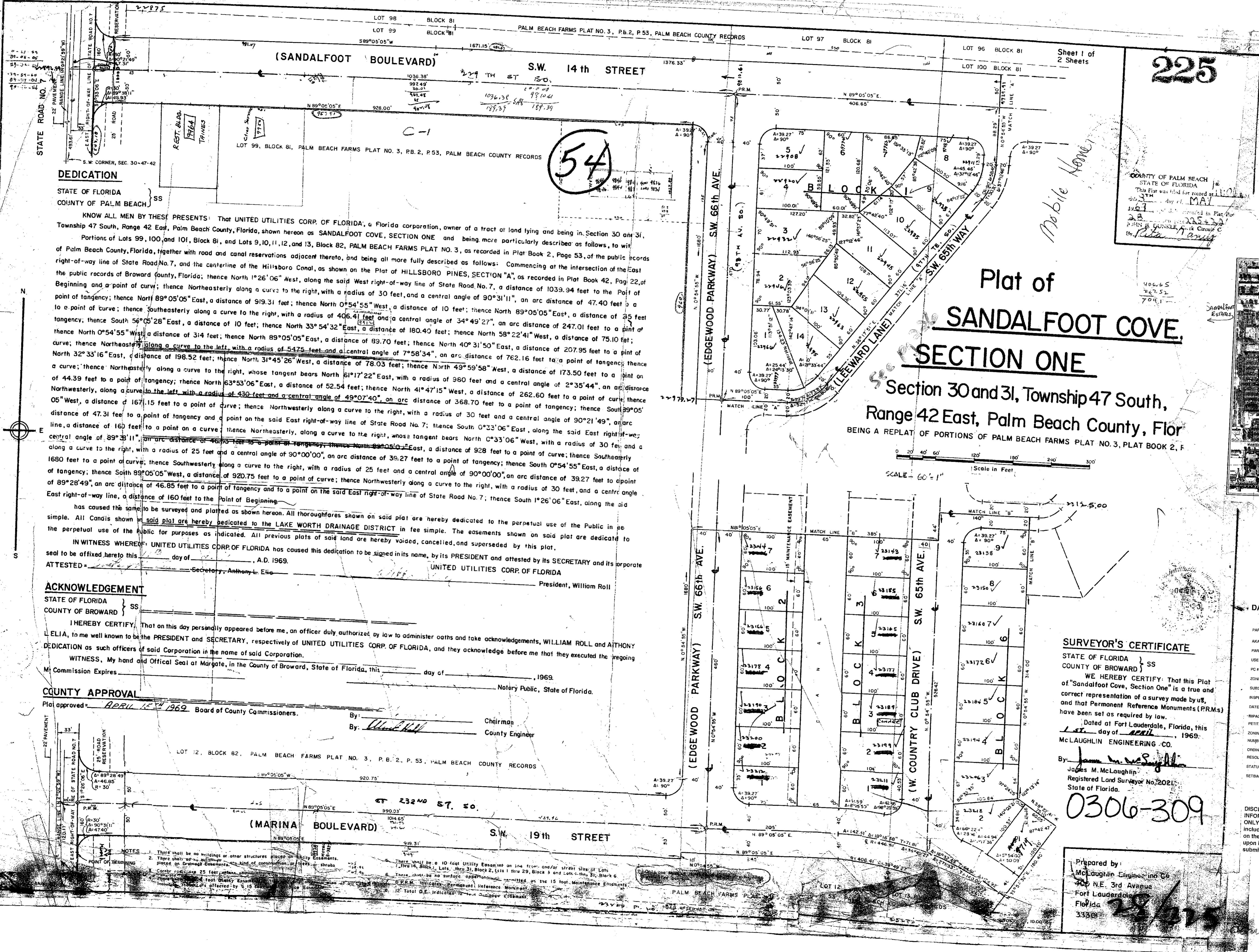
DRAWING NUMBER
28-226

DRAWING NUMBER

DRAWING NUMBER

DRAWING NUMBER

PLANNED CORPORATION - PALM BEACH COUNTY
REGISTERED PROFESSIONAL ENGINEER
REGISTERED PROFESSIONAL SURVEYOR
REGISTERED PROFESSIONAL LAND SURVEYOR
REGISTERED PROFESSIONAL CIVIL ENGINEER
REGISTERED PROFESSIONAL ARCHITECT
REGISTERED PROFESSIONAL MECHANICAL ENGINEER
REGISTERED PROFESSIONAL ELECTRICAL ENGINEER
REGISTERED PROFESSIONAL CHEMICAL ENGINEER
REGISTERED PROFESSIONAL INDUSTRIAL ENGINEER
REGISTERED PROFESSIONAL AERONAUTICAL ENGINEER
REGISTERED PROFESSIONAL METALLURGICAL ENGINEER
REGISTERED PROFESSIONAL NUCLEAR ENGINEER
REGISTERED PROFESSIONAL AGRICULTURAL ENGINEER
REGISTERED PROFESSIONAL FORESTRY ENGINEER
REGISTERED PROFESSIONAL MINING ENGINEER
REGISTERED PROFESSIONAL PETROLEUM ENGINEER
REGISTERED PROFESSIONAL MARINE ENGINEER
REGISTERED PROFESSIONAL AERONAUTICAL ENGINEER
REGISTERED PROFESSIONAL METALLURGICAL ENGINEER
REGISTERED PROFESSIONAL NUCLEAR ENGINEER
REGISTERED PROFESSIONAL AGRICULTURAL ENGINEER
REGISTERED PROFESSIONAL FORESTRY ENGINEER
REGISTERED PROFESSIONAL MINING ENGINEER
REGISTERED PROFESSIONAL PETROLEUM ENGINEER
REGISTERED PROFESSIONAL MARINE ENGINEER



DEDICATION

STATE OF FLORIDA
COUNTY OF PALM BEACH } SS
KNOW ALL MEN BY THESE PRESENTS: That UNITED UTILITIES CORP. OF FLORIDA, a Florida corporation, owner of a tract of land lying and being in Section 30 and 31, Township 47 South, Range 42 East, Palm Beach County, Florida, shown hereon as SANDALFOOT COVE, SECTION ONE and being more particularly described as follows, to wit: Portions of Lots 99, 100, and 101, Block 81, and Lots 9, 10, 11, 12, and 13, Block 82, PALM BEACH FARMS PLAT NO. 3, as recorded in Plat Book 2, Page 53, of the public records right-of-way line of State Road No. 7, and the centerline of the Hillsboro Canal, as shown on the Plat of HILLSBORO PINES, SECTION "A", as recorded in Plat Book 42, Page 22, of the public records of Broward County, Florida; thence North 1°26'06" West, along the said West right-of-way line of State Road No. 7, a distance of 1039.94 feet to the Point of Beginning and a point of curve; thence Northeastly along a curve to the right, with a radius of 30 feet, and a central angle of 90°31'11", an arc distance of 47.40 feet to a point of tangency; thence North 89°05'05" East, a distance of 919.31 feet; thence North 0°54'55" West, a distance of 10 feet; thence North 89°05'05" East, a distance of 25 feet to a point of tangency; thence Southeastly along a curve to the right, with a radius of 406.41 feet and a central angle of 34°49'27", an arc distance of 247.01 feet to a point of tangency; thence South 56°05'28" East, a distance of 10 feet; thence North 33°54'32" East, a distance of 180.40 feet; thence North 58°22'41" West, a distance of 75.10 feet; thence North 0°54'55" West, a distance of 314 feet; thence North 89°05'05" East, a distance of 89.70 feet; thence North 40°31'50" East, a distance of 207.95 feet to a point of tangency; thence North 32°33'16" East, a distance of 198.52 feet; thence North 31°45'26" West, a distance of 78.03 feet; thence North 49°59'58" West, a distance of 173.50 feet to a point of tangency; thence a curve; thence Northeastly along a curve to the right, whose tangent bears North 61°17'22" East, with a radius of 360 feet and a central angle of 2°35'44", an arc distance of 44.39 feet to a point of tangency; thence North 63°53'06" East, a distance of 52.54 feet; thence North 41°47'15" West, a distance of 262.60 feet to a point of tangency; thence 05° West, a distance of 167.15 feet to a point of tangency; thence Northwesterly along a curve to the right, with a radius of 368.70 feet to a point of tangency; thence South 89°05' distance of 47.31 feet to a point of tangency and a point on the said East right-of-way line of State Road No. 7; thence South 0°33'06" East, along the said East right-of-way; central angle of 89°3'11", an arc distance of 46.85 feet to a point of tangency; thence North 89°05'05" East, a distance of 928 feet to a point of curve; thence Southeastly along a curve to the right, with a radius of 25 feet and a central angle of 90°00'00", an arc distance of 39.27 feet to a point of tangency; thence South 89°05'05" East, a distance of 1680 feet to a point of curve; thence Southwesterly along a curve to the right, with a radius of 25 feet and a central angle of 90°00'00", an arc distance of 39.27 feet to a point of tangency; thence South 89°05'05" West, a distance of 920.75 feet to a point of curve; thence Northwesterly along a curve to the right, with a radius of 30 feet, and a central angle of 89°28'49", an arc distance of 46.85 feet to a point of tangency and to a point on the said East right-of-way line of State Road No. 7; thence South 1°26'06" East, along the said East right-of-way line, a distance of 160 feet to the Point of Beginning.

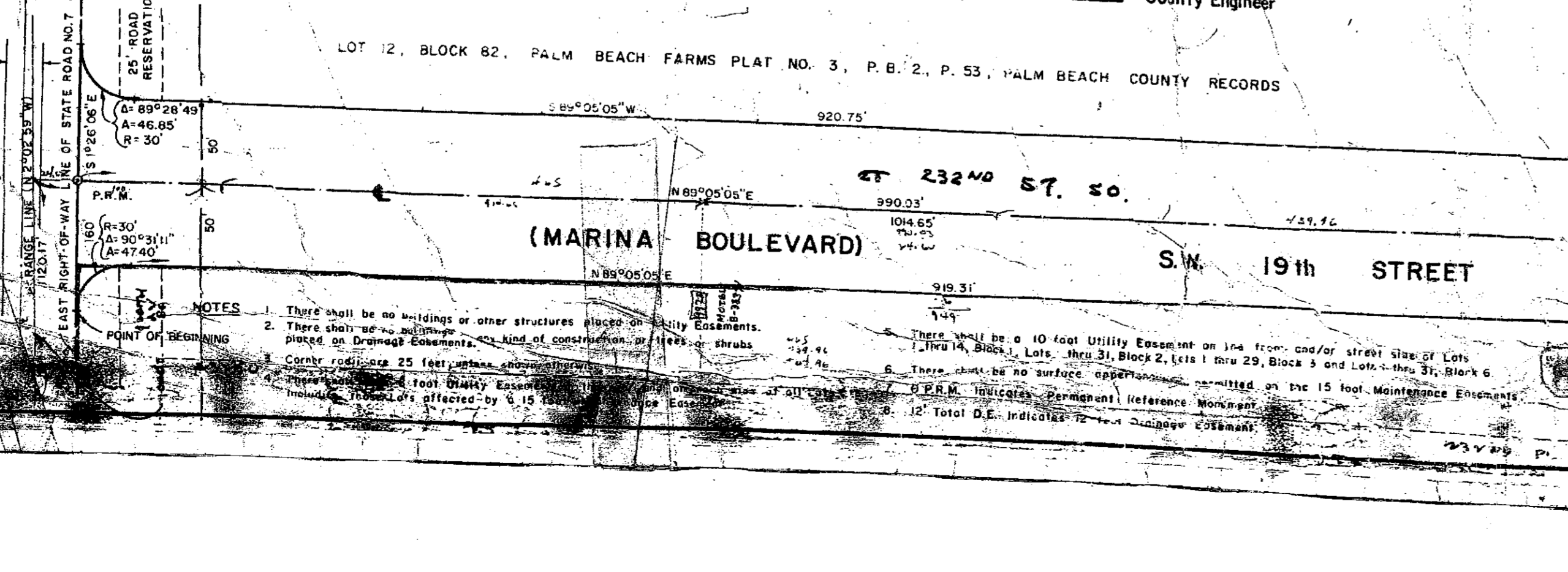
has caused this same to be surveyed and platted as shown hereon. All thoroughfares shown on said plat are hereby dedicated to the perpetual use of the Public in fee simple. All Canals shown on said plat are hereby dedicated to the LAKE WORTH DRAINAGE DISTRICT in fee simple. The easements shown on said plat are dedicated to the perpetual use of the Public for purposes as indicated. All previous plats of said land are hereby voided, cancelled, and superseded by this plat.
IN WITNESS WHEREOF, UNITED UTILITIES CORP. OF FLORIDA has caused this dedication to be signed in its name, by its PRESIDENT and attested by its SECRETARY and its corporate seal to be affixed hereto this _____ day of _____, A.D. 1969.
ATTESTED: _____ Secretary, Anthony L. Elio
UNITED UTILITIES CORP. OF FLORIDA
President, William Roll

ACKNOWLEDGEMENT

STATE OF FLORIDA
COUNTY OF BROWARD } SS
I HEREBY CERTIFY, That on this day personally appeared before me, an officer duly authorized by law to administer oaths and take acknowledgements, WILLIAM ROLL and ANTHONY L. ELIA, to me well known to be the PRESIDENT and SECRETARY, respectively of UNITED UTILITIES CORP. OF FLORIDA, and they acknowledge before me that they executed the foregoing DEDICATION as such officers of said Corporation in the name of said Corporation.
WITNESS, My hand and Official Seal at Margate, in the County of Broward, State of Florida, this _____ day of _____, 1969.
M Commission Expires _____ day of _____, 1969.
Notary Public, State of Florida.

COUNTY APPROVAL

Plat approved: APRIL 15th 1969 Board of County Commissioners.
By: _____ Chairman
By: _____ County Engineer



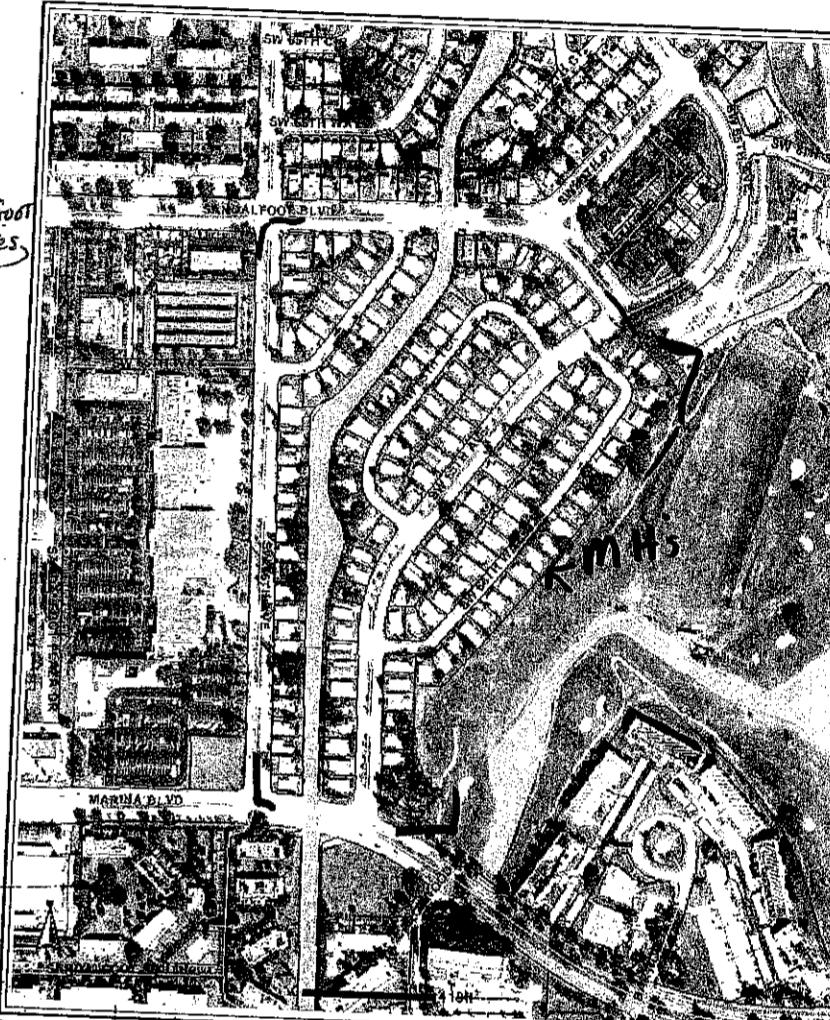
NOTES
1. There shall be no buildings or other structures placed on this plat.
2. There shall be no easements placed on this plat.
3. There shall be no utility easements placed on this plat.
4. There shall be no surface appurtenances placed on this plat.
5. There shall be no surface appurtenances placed on this plat.
6. There shall be no surface appurtenances placed on this plat.
7. There shall be no surface appurtenances placed on this plat.
8. There shall be no surface appurtenances placed on this plat.
9. There shall be no surface appurtenances placed on this plat.
10. There shall be no surface appurtenances placed on this plat.
11. There shall be no surface appurtenances placed on this plat.
12. There shall be no surface appurtenances placed on this plat.

225

Plat of SANDALFOOT COVE, SECTION ONE
Section 30 and 31, Township 47 South, Range 42 East, Palm Beach County, Flor
BEING A REPLAT OF PORTIONS OF PALM BEACH FARMS PLAT NO. 3, PLAT BOOK 2, F

SCALE = 60' = 1" Scale in Feet

COUNTY OF PALM BEACH
STATE OF FLORIDA
This Plat was filed for record at 11:00 AM
MAY 1969
in the Public Records Office
of Palm Beach County, Florida
by Rita Parry



SURVEYOR'S CERTIFICATE

STATE OF FLORIDA } SS
COUNTY OF BROWARD }
WE HEREBY CERTIFY: That this Plat of "Sandalfoot Cove, Section One" is a true and correct representation of a survey made by us, and that Permanent Reference Monuments (PRMs) have been set as required by law.
Dated at Fort Lauderdale, Florida, this _____ day of APRIL, 1969.
McLAUGHLIN ENGINEERING CO.
By: James M. McLaughlin
James M. McLaughlin
Registered Land Surveyor No. 2021
State of Florida.

0306-309

DATA BOX 45/47/30

PARK NAME	Sandalfoot Cove
AKA	
PARK ADDRESS	None
USE	
PC #	
ZONING	00-42-47-30-01-000-0000
SUBDIVISION #	AR
INSPECTION AREA #	4000-081
DATE OF APPROVAL	13
IMPACT FEE ZONES	1908
PETITION #	50356
ZONING QUAD #	
NUMBER OF SPACE APPROVED	54
ORDINANCE APPROVED UNDER	172
RESOLUTION	1988 G
STATUS OF PROJECT	
RETRACTS	

DISCLAIMER--
INFORMATIONAL PURPOSES ONLY. The information included in the data box and on the site plan is based solely upon information previously submitted by the applicant.

Prepared by:
McLaughlin Engineering Co.
400 N.E. 3rd Avenue
Fort Lauderdale,
Florida
33301